



Creative Natives
**ANNUAL
REPORT**
2024



Table of contents

4	What is Creative Natives?	28	Referrals
6	What we offer?	30	Case of Study
8	How did Creative Natives come to be?	36	Stats 2024
10	What is the mission and objectives of CN?	38	CN Team
12	Creative Natives' Young People	42	What are the highlights of CN over the past years?
14	Workshops, projects & Programmes delivered	44	Looking to the future
22	Days out, museums & exhibitions	46	What are the hopes for the future of CN?
20	What was new this last year for CN?	48	Testimonials
26	Environmental	50	Our Supporters



What is Creative Natives?

At Creative Natives, we support young people aged 14-24 through creative activities in our safe and welcoming studio space in Edinburgh. Typically, our young people may need some support attending the studio for the first time but, with support, they quickly feel part of the group and are inspired to build on their existing skills or try something completely new!

Supported by our team of artists and key workers, we utilise the arts holistically to build confidence, develop new skills, and nurture friendships. We can then identify appropriate routes for progression for our participants.

What We Offer?

At Creative Natives, we offer a variety of different activities based on art and design. However, we believe that young people are at an age when they are interested in exploring creativity in all its splendour and are interested in exploring new fields such as:

Drawing & Painting

Illustration

Photography

Arts & Craft

Animation

Music

Costume Making

Spray Printing

Graphic Design

Special Workshops
& other activities

In addition to in Studio activities we also offer:

- **Inspirational talks** from visiting artists and creatives
- **Days out** to visit galleries, museums and other related events that interest our participants.

In recognition that most of the young people come from deprived areas and food poverty continues to be a problem in Scotland, **we provide lunch and material expenses** to facilitate attendance.

How did Creative Natives come to be?

Creative Natives, formerly known as Digital Natives, started operating in April 2014. Since then, the service has been evolved according to the needs of the groups of young people who have participated.

The original aim of the project was to provide participants, between 14-24 years-old who were at risk of social exclusion and isolation, a space to develop their creativity. Over the period of a 12-week pilot we aimed to grow the confidence and resilience of the young people attending. It quickly became clear that the client group were struggling to maintain this formal structure, so we adapted the project to a more person-centred approach with more flexibility to accommodate sporadic attendance. It was decided not to have a set time limit so as not to create anxiety and be accommodating to larger groups, creating social connections and promoting a sense of community while learning in an art and design studio.

Over the years, having learned more about the barriers that these young people face, we are now more informed about the general needs of the young people, and more able to offer appropriate support and guidance whilst building skills and confidence in a wide range of creative pursuits. We now welcome new clients to the project in a very gentle, reassuring way and then, generally, they will be able to join our busier sessions which helps them build on their social skills and develop new friendships in a supportive, creative environment.



The background of the page is a light blue watercolor wash. A large, irregular white circle is centered on the left side of the page, containing the main heading text.

What is the mission and objectives of Creative Natives?

Creative Natives provides a non-judgemental space where **disengaged young people, aged 14 to 24 years old, can grow their creative potential, confidence, resilience and connections** in an Art and Design studio. We encourage and nurture their creative ideas as well as offer guidance and support to ensure young people have a valuable experience and are more confident and better equipped to move on to a positive destination.

One of our main objectives is improving the terms on which individuals and groups take part in society – improving the ability, opportunity, and dignity of those disadvantaged on the basis of their identity.

It is our experience that some groups of young people have barriers that prevent them from fully participating in social, economic, and political life. **Creative Natives is a supportive and non-judgemental environment, where young people can express themselves and build their skills.** In recognition of food poverty, exacerbated by the current cost of living crisis, food and materials are provided for all attendees.

Further specific support can be accessed through our partnership with Cyrenians and their range of relationship based support services focussed on accommodation, food, mediation, employability and learning – Cyrenians have the skills to make it happen.

The background of the page is a vibrant red watercolor wash. A large, irregular white circle is cut out from the center, creating a frame for the text. The watercolor has a textured, mottled appearance with varying shades of red and pink.

Creative Natives' Young People

Young people who come to Creative Natives hail from a variety of socio-economic backgrounds. All of them have a different story to tell, varied life experiences and clearly, they have their reason why they decided to be part of this project. For some young people there are educational links, for example, we have had young people attending with a very specific goal in mind, such as creating a portfolio for college, and other young people who come along feeling lost after having a very negative experience at school which has generally led to non-attendance.

They are looking for space where they can explore their options without feeling the pressure to perform in a traditional academic sense. All of the young people in attendance are experiencing some kind of a barrier to moving forward positively in their lives - poor mental and physical health, neurodiversity, discrimination by gender identity, economic issues, poor social skills, social anxiety, confidence issues, etc.

When young people visit the studio with a parent, guardian or sibling, Creative Natives staff ensure that there is no expectation for them to talk about their disorder or its effects, even if the referral is from CAMHS. The studio is meant to offer a break from the usual focus on treatment or recovery discussions in private appointments or meetings. Our only goal is for the YP to enjoy their visit and participate in creative activities during their time in the studio.

Workshops, projects & Programmes delivered

In addition to general attendance to the studio, we also promote and offer one-off workshops for the young people. These workshops focus on specific skills and techniques and include – portfolio building, screen printing, installation art and sculpture, ceramics and other activities with the Creative Natives team, external artists and professionals.

Due to the different nature of the participants skills and interests it can be beneficial to bring them together and work on the same theme, this creates further opportunity to build relationships. Workshops can be delivered in the Creative Natives studio, professional workshops, museums or other appropriate venues.



The Key to Work Program

In conjunction with Cyrenians' Key to Work project, Creative Natives has been running weekly small group workshops engaging young people aged 14-18 and struggling with mainstream education.

Local schools and organisations who support young people are invited to bring young people along to participate in more structured work-related activities including, crafts, ceramics, graphic design, blockprinting, music recording and editing, set building, animation, filmmaking and video editing.

The programme consists of 6 weekly placement sessions, as well as an introduction meeting beforehand and an employability skills session afterwards. Each session lasts half a day and aims to build their skills, reduce anxiety and social isolation, and nurture respectful relationships between peers, key workers and session leaders, while giving young people the opportunity to explore careers through spending time with activity leaders who are knowledgeable and passionate about their jobs. The schools and activity agreement hubs that refer participants to this programme are largely located in areas of multiple deprivation, and the participants largely experiencing poor attainment and/or disrupted attendance. Key to Work has encouraged positive, professional relationships between teachers,

youth leaders and Cyrenians Keyworkers to facilitate appropriate groups.

Key to Work groups have had the opportunity to explore how creativity can help support their wellbeing in a safe and inclusive environment; the studio has seen art utilised as a creative outlet for emotional stress, a distraction from feelings of anxiety and a key component in building self-confidence. Participants have engaged in a multitude of creative practices, most of which they had never previously tried. These have included spray painting, leather work, photography, painting, drawing, clay modelling, animation, music, filmmaking and much more!



The team at Creative Natives are key in creating the studio's nurturing environment. The way they engage with participants facilitates positive and respectful relationships, and the participants have expressed how validating it is to be treated by adults as equals. They have helped many participants navigate the transition beyond school, opening their eyes to opportunities in the creative industries, as well as promoting the therapeutic qualities of art.

One group which benefitted from their time at Creative Natives consisted of six 4th year girls from Liberton High School. Their arts experience was varied; however all were inherently creative individuals. The girls struggled with attendance in school but were motivated to attend all six Creative Natives sessions. In particular, one participant's confidence (ET), grew immensely.



While she appeared to be shy and somewhat withdrawn in the first week, by the third session she was chatting enthusiastically with the Senior Keyworker about her passion for 90s Britpop, and recorded herself singing for a short animation about pigeons. This improved confidence has been evidenced throughout her attitude to her school, social and personal life.

"I don't normally socialise this much, this is nice!"

- ET 13/03/2024

"For all our young people the experience of working with Cyrenians in general and Alia [Activities Support Worker] has been an overwhelmingly positive one. A rather disparate group of, primarily neurodivergent, young people bonded and became firm friends. Two of the group, who perhaps felt uncomfortable interacting with others, have really come out of their shells and are now happy to talk and engage with staff and peers. For two thirds of the group, school attendance has improved as well as motivation for attending mainstream classes. A teacher just stopped me in the corridor, this morning, to marvel at the transformation of one of the pupils who is now attending all classes and contributing to class discussions whereas as before they would have been too anxious.

It has been a pleasure and a privilege to see the transformation in these young people developed and encouraged by Cyrenians - we look forward to building on this with them and other young people next year!" -

Mr Tully, Support for Learning Teacher at Liberton High School 26/06/2024

Eating Disorder Project

Creative Natives works with CAMHS, Penumbra, and CAPS Advocacy to support young people experiencing eating disorders. We provide an important space for these young people, referred to us by CAMHS, where they can be creative and enjoy a comfortable social atmosphere.

The young people in recovery, and their parents, appreciate the relaxed approach of the studio where they can find respite from medical appointments, and they also value the integration of creative time to their routines as they adjust into phased returns to school and reengaging with peers.

We have been working very hard over the past year to ensure that those who were referred from CAMHS for our specific eating disorder project, receive a compassionate and positive induction to service.

All young people who have been referred to this project have stated how relaxing and welcoming the Creative Natives studio and staff are. Staff have taken great care to ensure the young people see the studio space as somewhere they would like to spend time, and somewhere that the young people have been happy to undertake both familiar and new creative pursuits.

At the referral stage, when young people attend the studio with a parent, guardian or sibling, Creative Natives staff are very clear that, although the referral came from CAMHS, there is no expectation or pressure on the young person to discuss their disorder or how it affected them whilst at the studio: rather, visiting Creative Natives should be seen as a respite from appointments and meetings or anywhere else where there was an expectation to discuss their treatment/recovery. Our only expectation is that the young person enjoys visiting the studio and is creative whilst in attendance. This information was greeted with relief by both parents and the young person with a marked change to how positively they viewed attending the service moving forward.

The young person enjoy a wide range of creative activities whilst in attendance: from drawing and painting, tile design and decoration

through to sculpting and modelling with clay, collage, macramé, origami and crafting activities. Key Workers offer lots of positive feedback throughout the sessions and witness a huge improvement in confidence and belief in their own abilities from participants, with a much greater willingness to try new creative activities and techniques. This allows most of the participants to move away from the structured sessions on offer in favour of following their own paths to create self-directed, unique and original artworks. This is a very positive indicator of the young person improves self-esteem: feeling empowered to trust their own ideas and creativity. The participants also, increasingly, took part in discussions within the studio environment, discussing their art/creations with other people in the room and displaying greater willingness to accept positive criticism and critique other people's work within the safe, inclusive atmosphere the studio provides.



Days out, museums & exhibitions

The social aspect of Creative Natives is one of its main strengths and helps build the confidence and resilience of participants. Before attending the project, visiting new places or meeting new people can be anxiety inducing and frightening prospects for our young people. If young people find social events and days out stressful or difficult in their everyday lives, this will tend to come up in day-to-day conversations in the studio. We address this in a gentle, supportive way, inviting them to join us on trips to local galleries or museums, or picnics in local parks to create art together outdoors.

Discussing their barriers or perceived difficulties in attending these types of activities and involving the young people in their search and planning, allows us to highlight areas of concern for our clients, find creative solutions and offer support and reassurance. Attending such events often creates a significant boost in confidence and self-esteem: a fun, lively, shared experience with new friends in new, exciting and inspiring environments. As well as a few days out in the city visiting greenspaces for picnics when the weather was good, recent days out include:

- 📅 **August 15th** - 4xYPs attended an **Edinburgh International Arts Festival Tile Making Workshop** at the French Institute
- 📅 **September 19th** - 4xYPs attended the **Famous Faces Exhibition** at the Scottish Portrait Gallery
- 📅 **October 25th** - 8xYPs attended a trip to the **Cyrenians Green Skills Centre**
- 📅 **November 7th** - 6xYPs attended the **Grayson Perry Exhibition** at the National Museum
- 📅 **December 18th** - 7xYPs attended a trip to the **Cyrenians Cook School**
- 📅 **January 1st** - 2xYPs attended a **Risograph Workshop at Typewrangler studios** in St Margarets House
- 📅 **January 24th** - 4xYPs attended a trip to **Dynamic Earth**
- 📅 **February 27th** - 6xYPs attended the **Andy Warhol Textiles Exhibition** at the Fruitmarket Gallery
- 📅 **April 16th** - 5xYPs attended the **Wildlife Photographer of the Year Exhibition** at the National Museum
- 📅 **August 13th** - 6xYPs attended a trip to the **Cyrenians Green Skills Centre**



All these trips went well, and the young people enjoyed leaving the studio and getting out and about Edinburgh.

As a group we will be continuing our days out because we can see how important this is for participants, leading to positive change, such as forming friendships amongst their peers and starting to go venture out, doing things themselves.



The perspective and reactions that young people have in reference to museums and exhibitions are very interesting. Many of the young people who have participated in these cultural outings have told us that they had never entered a museum or gallery due to various reasons such as: they did not know that many facilities are free to visit; they are intimidated by the people at the entrance of the enclosure; they have heard that they are boring places and are not for young people; and some had not considered the existence of these spaces.

During visits we set a task i.e. to choose a piece of art that resonates with them and afterwards to explain why and give a critique of the piece. This encourages critical thinking and invokes discussion and debate which is empowering.

We strongly believe that it is a necessary activity both for the educational, social and personal development of the young person.



The background of the page is a watercolor-style illustration in shades of green. A large, irregular white circle is centered on the page, and the word "Environmental" is written in a bold, green, sans-serif font within this circle.

Environmental

Creative Natives is cognisant of the climate emergency. Alongside reuse, recycling and awareness of carbon footprint, there are growing opportunities to explore environmental issues with the participants.

As an **art & design studio we are improving day to day and aim to have less print impact**. We are trying to buy materials that come with less packaging, paints based on water or non-toxic chemicals and reuse as much as we can. We also try to buy locally, supporting local business and reducing carbon footprint.

One of our suppliers is Out of the Blueprint (outoftheblueprint.org), a social enterprise in Leith that provides print services. They use sustainable RISO and GOCCO printing which is an affordable, and eco-friendly way to print. This organisation also supports young artists in Scotland through the power of print.

In addition, we are strongly focused on recycling as much as we can. We have recycling bins at the studio, and we encourage young people to be aware of how important it is to learn how to care about our planet.



Referrals

Skills Development Scotland (SDS)

Despite no formal relationship, most of our referrals come from SDS. We have a very close relationship with the Edinburgh SDS team and are recognised as a successful and supportive route for young people to access higher education through the development of the portfolio.

Schools

We receive referrals from local Edinburgh high schools for young people who have additional support needs and an interest in something creative. We currently have two young people attending weekly during their school-free periods. These referrals come directly from the schools via the SDS workers assigned there.

CAMHS

Post-Covid Creative Natives has strengthened partnership working with CAMHS. Referrals via agencies has increased as a consequence of post-covid “symptoms”. Waiting lists for services such as CAMHS are lengthy, and they refer some of the young people who could benefit from our service.

Self-referrals & referrals from past participants

Since Creative Natives has started, we have mainly received participant referrals through different agencies and schools. However, we have started receiving new participants that have been signposted to us by past participants that were happy with the service provided and think that it will help others.



Case of Study

In this section, we will delve into two compelling case studies featuring young individuals actively engaged in our program. **These case studies offer a detailed exploration of the experiences and outcomes of these participants, providing valuable insights into the impact and effectiveness of our initiatives.** We aim to shed light on the transformative journey undertaken by these young people within the framework of our project, showcasing both challenges and successes. Through these narratives, we hope to convey the significance of our work and the positive influence it has on the lives of the youth we assist day to day.



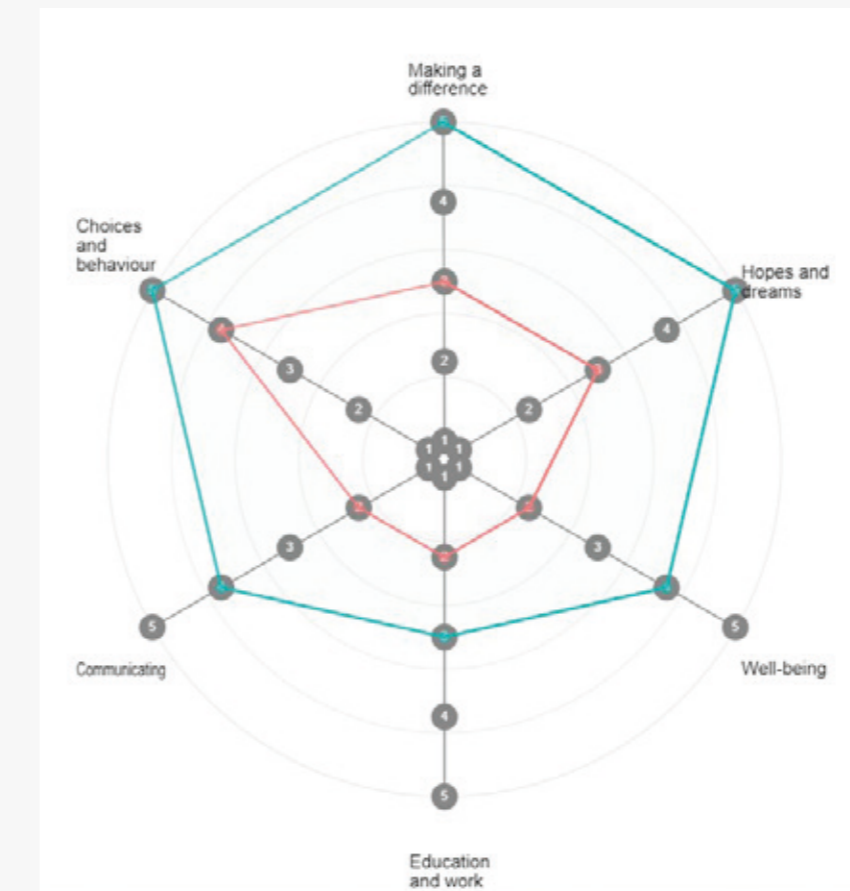
G CREATIVE NATIVES Participant

G (15 year-old female) mostly engages with more intricate art i.e. drawing and jewellery making. She has expressed an interest in learning to play the bass guitar, so she will be invited to music sessions at Creative Natives beginning in October. She frequently and enthusiastically engages with the other young people, bonding over shared attitudes towards school life. She has formed close friendships with other young people at Creative Natives (G regularly attends non-closed sessions).

G has struggled to attend school as her anorexia became 'overwhelming' but, due to her increased confidence through attendance at Creative Natives, has been able to rebuild relationships with her friend group and has re-engaged with school.

Through our Outcome Star activity to track progress, we have seen improvement in communication, hopes and dreams and well-being.

Outcome Star



**“Creative Natives has
been a great space for
G during these more
challenging times.”**

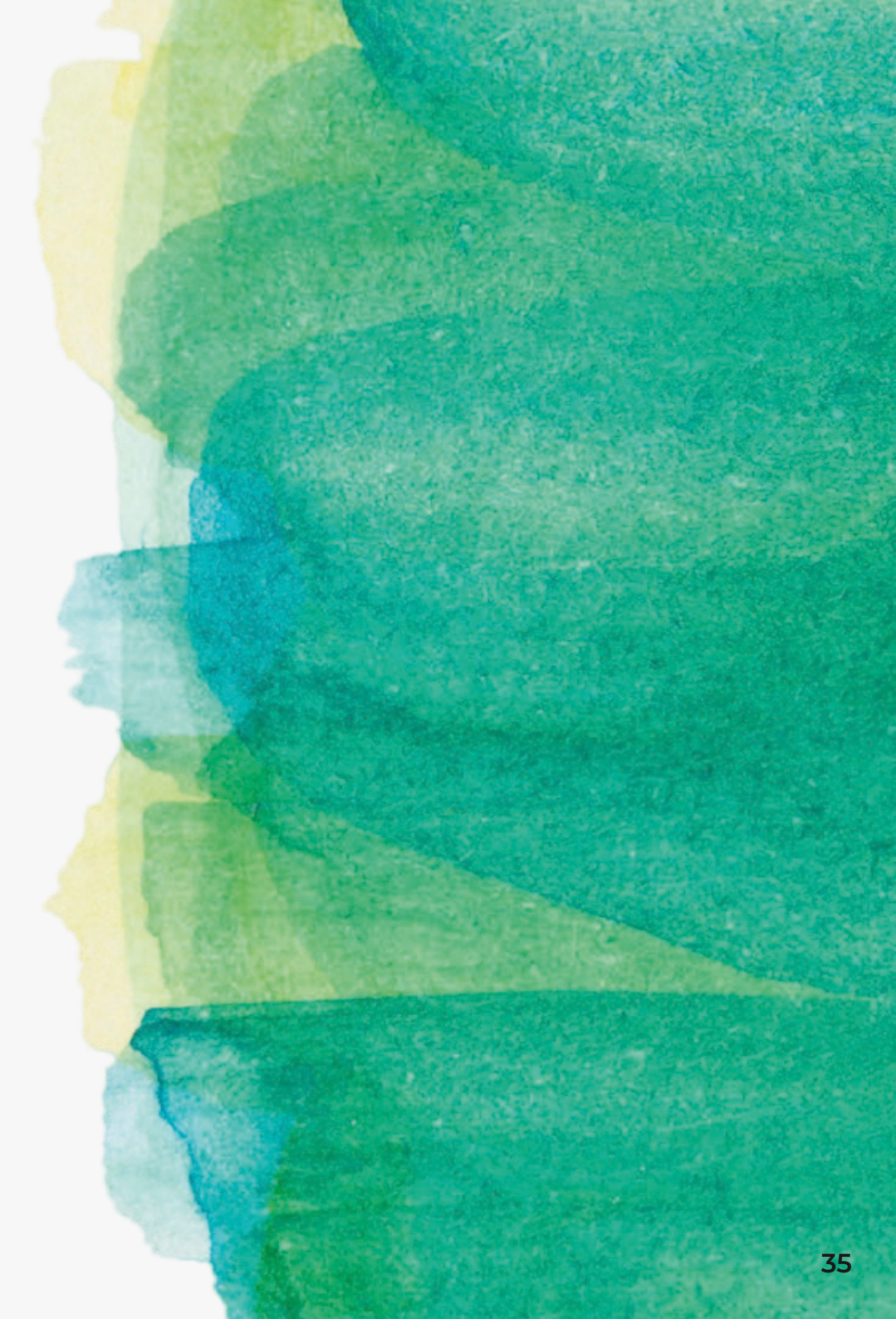
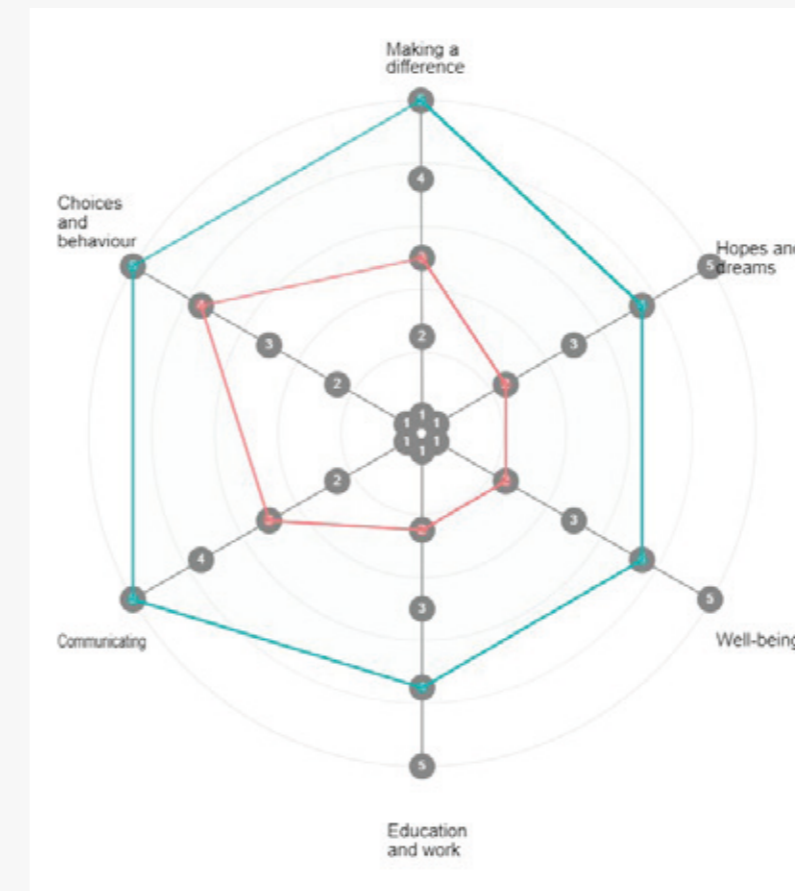
- Mother

N CREATIVE NATIVES Participant

N (17 year-old female) often brings her own sketchbook and has been making really beautiful, intricate patterns with materials available to her in the studio. During one of her first sessions, she created a painting which has since been used as the background of the Creative Natives CAMHS waiting room poster (she was excited to have her work used). She's also participated in crochet and macramé. Every time N attends the studio she is engaging more openly and enthusiastically in conversation with staff and other young people.

Through our Outcome Star activity to track progress, we have seen a marked improvement her communication, wellbeing, choices and behaviour and her hopes and dreams.

Outcome Star





Stats 2024

From September 2023 to August 2024, a total of **62 participants** were enrolled in Creative Natives and benefiting from the service that Creative Natives provides. The Eating Disorder project specifically has had **11 referrals** that we've been working with. The demographic distribution is as follows:

Age

Age 13: 2 participants
Age 15: 6 participants
Age 16: 14 participants
Age 17: 18 participants
Age 18: 15 participants
Over 18: 7 participants

Referrer

High School/SDS: 26
CAMHS: 21
Other Cyrenians: 11
Self-Referral: 4

Ethnicity

Scottish: 37
British: 9
Polish: 3
Spanish: 1
DNR: 12

Soft Outcomes

82% expressed increased confidence and improved mental health.

Hard Outcomes

4 found Part-time employment
5 started college

Creative Natives Team

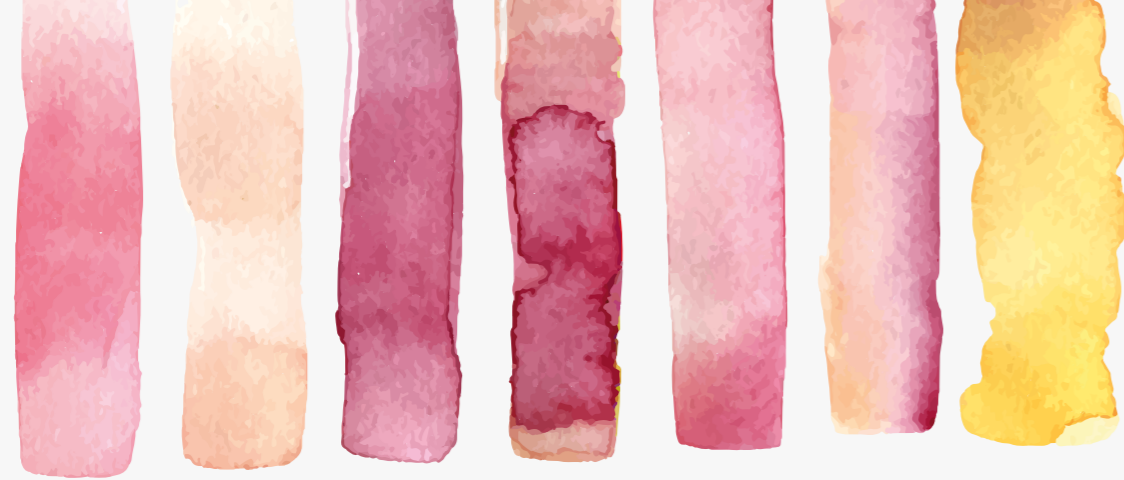
Creatives Natives is made up a team from **Cyrenians** and **Community Enterprise**, all of whom have strong backgrounds in creativity, arts and crafts, as well as being committed to the third sector and communities.

Sara Bayo (Community Enterprise)

Creative Lead

Sara is a professional creative and graphic designer who has specialised in the cultural and social sector for more than 18 years. In addition, she has always been linked to the children's and youth sector, working in schools, coordinating summer camps, participating in after school clubs delivering sports and creative activities. Always being aware of what difficulties that exist in the sector, she has developed educational and creative based projects and workshops in order to improve young people self esteem and mental-health.





Grant Pringle (Cyrenians)

Senior Arts and Wellbeing Key Worker

With a background in illustration and music, Grant has used art, music, film and carpentry to deliver creative youth projects in Edinburgh and the south of Scotland since 2008. He likes the buzz of live music and is daft about cats and curry.

Sarah Cronin (Cyrenians)

Arts and Wellbeing Key Worker

Sarah is a musician and artist with a passion for holistic arts education. Her lived experience of improved mental health through participation in art and music fires her passion for building self-esteem and resilience in our young people. She enjoys stomping around in nature, bashing out tunes and making a mess in the name of creativity.

Alia Davies (Cyrenians)

Arts and Wellbeing Key Worker

Alia is passionate about painting and drawing, specialising in portraiture and the medium of oils. During her school days, you could always find Alia chucking paint around in the art classroom (even if she wasn't strictly supposed to be there). She will show you photos of her dogs whether or not you've asked to see them and loves spending time staring at the moon.

Maili Fraser (Cyrenians)

Arts and Wellbeing Key Worker

Maili is a filmmaker and participatory artist from the Highlands who loves working collaboratively across art forms. They are passionate about building accessible, open, and nurturing spaces where young people can utilise the arts for self-expression and building community. Maili loves live music, watching weird films, and spending time with their many houseplants.





Creative Natives- our past influencing our future

Over the past few years we have been capable of creating a space with an inspiring, fun and inclusive atmosphere **where young people experiencing poor mental health can feel valued, listened to and safe.**

The number of participants has increased considerably and we are now a well renowned service in Edinburgh, especially for organisations working with young people, schools and other services focussed on improving mental health, among others.

We have now **extended our opening hours to accommodate specialist sessions** - art, music, film making, leatherwork, arts and crafts, etc - and regularly invite creative practitioners to deliver sessions in our studio.


We have also **developed the social aspect of the project to further promote good mental health in service users.** Trips to places of interest in and around Edinburgh, which would be very challenging for many participants to access themselves, can now be undertaken within the safe confines of our supportive group.

In addition, our **free Portfolio preparation program** has been incredibly successful in alleviating stress and misconceptions and provides guidance and tools for all the young people that need support to access college. Due the nature of our current participants, this activity is no longer offered.

A large, abstract watercolor splash in shades of orange and brown, with a circular white cutout in the center. The text is centered within this cutout.

Looking to the future

From 1st September 2024 Creative Natives will be passed from Community Enterprise into the safe hands of Cyrenians This is a natural progression for the project and, while it remains close to our hearts at Community Enterprise, we believe that the Cyrenians team have the skills to work with the increasingly vulnerable young people that use Creative Natives. In line with taking a Public Health Approach to Homelessness Prevention, Cyrenians will concentrate on preventative and early intervention work with people most at risk of becoming homeless. Their focus will continue to be on skilled key workers and creative practitioners supporting young people in a person-centred, trauma-informed way to be creative and develop their skills and confidence through art.



What are the hopes for the future of Creative Natives?

The team at Creative Natives will continue to respond to the specific needs of our clients, expanding their options and improving their life choices. There is a particular interest in connecting with new partners to improve access to services and to create new and interesting pieces of work with our young people. The team are currently looking into how the art produced with the project can be displayed to reach a wider audience in the Edinburgh.

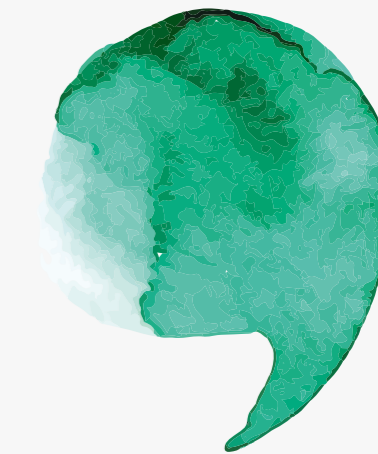
These are some of our hopes for the following years:

- **Offer support and guidance** to ensure we fulfil the aspirations of our service users.
- **Build the support network** of agencies who promote good mental health.
- **Strengthen partnerships** and input from the creative sector.
- **Continue to offer inspiring, aspirational experiences** for our young people build on the creative skills and experiences of our service users.



Testimonials

“Our 16 year-old son has greatly benefitted from having his weekly Creative Natives session to go to. It’s exactly what he needed as he has always enjoyed being creative at home (drawing, painting, inventive model-making) but needed a unique, supportive and safe space to create with other like-minded young people. This is exactly what Creative Natives is. You can tell the minute you walk in the room, it’s quietly buzzing with artistic inspiration...and the support workers are ‘nice, kind and they guide you if you get stuck on something’ says our son. He also says, one of the best things about Creative Natives is: ‘making friends and getting into interesting conversations’. We are so thankful for this space as it’s essential for Neurodiverse youngsters to meet up with others who ‘get them’. This was very difficult to find in Edinburgh as there are only the odd classes during the holidays but nothing on a weekly basis for neuro diverse young people. It’s also crucial that our young creatives are not isolated as this can lead to all sorts of problems. Our son loves his time with his other ‘Creative Natives’, he’s made friends, is gaining more confidence, and heaps more independence... all essential skills for this brave New World we live in.” - **Parent of CN participant**



“Dear Grant...I would like to thank creative natives for the continued support you have given and continue to give my daughter at your group...The steady care and the anchor this has provided for her is second to none..I don’t know how we would manage our complicated circumstances without it...The friendly and safe space has helped her so much and she has a social and creative outlet that has helped her steer through each week ...The confidence this is building is awesome...This group is so needed for her mental health and wellbeing..I cannot thank you enough.. Her artwork is improving all the time...please convey this to the workers for me...Well deserved praise...” - **Parent of CN participant**

Our Supporters

We gratefully acknowledge and appreciate the support of all our funding partners and supporters, including:

- National Lottery Community Fund
- The Robertson Trust
- Thrive Edinburgh
- NHS Lothian (CAMHS)
- Community Enterprise (contribution from reinvested profit)



Media Gallery

This section is your go-to resource for exploring our latest testimonials, highlights, and other engaging videos. Dive into the stories and experiences that define who we are and what we do. Whether you're looking for inspiration, insights, or simply want to see our work in action, you'll find it all here.

For more information and to stay updated with our latest content, be sure to visit our website and follow us on social media.



www.creativenatives.org.uk



<https://www.instagram.com/cyrenians/>



Creative Natives Highlight Reel 2022

<https://www.youtube.com/watch?v=7gtlPHTYpzw>



Learn to Surf

Learning to surf is a short film where the intention is to illustrate the significant impact anxiety has on the lives of many of the young people who attend Creative Natives. Video created by young people attending Creative Natives. Project supported by Thrive Edinburgh.

<https://www.youtube.com/watch?v=100tBCJTztl&t=2s>



Testimonials

https://www.youtube.com/watch?v=_gN0o7viZl4

<https://www.youtube.com/watch?v=rzmONYPpJ6w&t=1s>

<https://www.youtube.com/watch?v=2upQDkeWKSQ>

https://www.youtube.com/watch?v=Jn_jxTSL-8s&t=6s

Creative Natives

St Margaret's House - Basement 1 Room 10
151 London Road EH7 6AE, Edinburgh

www.creativenatives.org.uk

Creative Natives is a project created by:

 community
enterprise

Bold.

cyrenians